



The Helping Hand

The voice of Community Partnership for Children

We restore families, support caring relatives, connect children with loving homes and prepare adolescents for adulthood.

**VOLUME 1, ISSUE 4
AUGUST 2007**

Inside this issue:

3rd Annual Hand of Hope Poker Run Slated For October 7, Topped With All New Biker Bash And Reverse Drawing

The third annual Hand of Hope Poker Run, has been scheduled for Sunday, October 7. Biker participants will be vying for a first place prize of a Florida getaway and \$500 cash.

Burgoyne Properties has signed on as this year's Event Sponsor. "This year's event promises to be bigger and better than ever," said CEO Ron Zychowski. "We are especially thankful to Burgoyne Properties for their incredible support."

The run will begin at the Daytona Beach Kennel Club and Poker Room, and it will end with a high energy Biker Bash sponsored by Ocean Walk Shoppes at the Daytona Bandshell.

The Bash will include delicious tastings from popular local area restaurants, LIVE entertainment from the Daytona Blues Society All-Stars, and exhibits from biker retail vendors.



Bikers get ready to take off at last year's 2nd annual poker run

The agency is also holding a reverse drawing contest where the last ticket drawn is the winner. **Tickets are available for \$100 and only 100 will be offered.** The winning ticket will include a 5day/4night vacation to St. Thomas, Virgin Islands, hotel accommodations, airfare for two, and \$300 cash. You do not need to be present or participate in the run to win this drawing.

Participants may register for the run and purchase drawing tickets online at www.communitypartnershipforchildren.org.

By The Numbers	2
My Day With An Adoptions Homefinder	2
Emergency Shelter Opens	3
Case Management In Putnam County	3
A Day At The Beach	3
Calendar Of Events	4
The Sunset Of Colors	4



"The Sunset of Colors"
By Amber
Page 4



Community Partners To Hold Make A Difference Day 4Kids 5K

Make A Difference Day is the most well known national day for helping others. The day designated for this is the fourth Saturday of each October, and celebrates neighbors helping neighbors. Everyone in the community is encouraged to participate. In fact, thousands do each year.



Marking this year's Make A Difference Day will be the first annual **Make A Difference Day 4Kids 5K** with proceeds to benefit at-risk children in Volusia and Flagler counties.

The event is presented by Community Partnership for Children, Food Brings Hope & Westside Elementary School. Proceeds will help abused children, break the hunger and poverty cycle for

homeless children, and support quality educational programs for children.

October 27, 2007

Chelsea Place, Ormond Beach

Registration: 6:45am - 7:45am

Race Start: 7:45am

To learn more about participating and sponsorship opportunities, visit communitypartnershipforchildren.org.

On June 30, the fiscal year came to a close for Community Partnership for Children. We have made significant improvements in our performance, and I am proud of my staff and all of our partners who work together to protect our community's children.

Here is how we finished the year:

- ✧ 7,426 abuse reports in FY 2007, down 3% from the prior year. 490 children removed from their homes, down 13% from last year.
- ✧ 490 cases, up 15% from last year.
- ✧ 145 adoptions, up 14% from last year and an all time record for the District.
- ✧ The average length of time that children were out of their home dropped to 11 months.
- ✧ The percent of children reunified within 12 months was 66.7%, an 11% improvement over last year but 9.5% lower than 76.2% required. We did not perform to standard here.

- ✧ The percent of children adopted within 24 months finished at 44.8%, which is 12.8% higher than the required 32%.
- ✧ Children returning to Foster Care within 12 months of reunification ended at 10%; 1% higher than the 9% target. We did not perform to standard here. No district met this measure.
- ✧ 99.74% of our children were seen this year; this is .26% below the required 100%. No district met this measure either.

The success of our children continues to rely on the strength of our partnerships with the community.

Sincerely,
Ron Zychowski, CEO

My Day With An Adoptions Homefinder

What captures me on most days is knowing that some of the children in the care of Community Partnership for Children are orphans and may never find a forever family. Since there is a shortage of adoptive families, some of the children will age out of foster care and go on to live life on their own. They will be a family of one.

The fate of these children is always on my mind and in my heart. I often wonder who these children will visit over the holidays. Who will go to their college graduation? Who will give them away at their wedding? Who will share in the birth of their first child?

When I place my own son's face on the image of these children, the thought of this fate is simply unbearable. I can't imagine my son going through life without a family. This tragic image simply seals my own fate --I must do everything possible to help these children. We all must share their story at every possible opportunity



Prospective parents spend time with children at an April matching event.

nity in the hope that some day we will find a perfect family for them.

In August 2006, Community Partnership for Children formed the Adoption Unit, a team charged with finding permanent homes for our children who are eligible for adoption.

During the past several months, I have had the pleasure of teaming up with Rosalind Workmon and Ayana Alexander, adoption homefinders for Community Partnership for Children. Today,

these two ladies are working to find a forever family for 60 children who are eligible for adoption.

In an effort to connect these 60 children with prospective families, Rosalind and Ayana schedule special matching events. At matching events, children are brought together with prospective parents for a day of fun and fellowship.

On a recent Saturday, I joined Rosalind and Ayana at a matching event. We spent the afternoon with hopeful parents and children at a riverside park and enjoyed a picnic lunch. We chased lizards, counted fish, and climbed trees. I saw no difference between these children and my own son. For the most part, they were all just regular, spunky kids full of hope. In fact, there was really only one heartrending difference and that is my son was able to go "home" to his family that evening.

By Jo Lynn Deal

Community Partners Announced Opening Of Emergency Shelter For Children

Community Partnership for Children and Florida United Methodist Children's Home recently announced the opening of an emergency shelter for children. The shelter, operated by Florida United Methodist Children's Home, provides emergency services to children ages 6 to 17 who have been removed from their home due to abuse, neglect, abandonment or family breakdown.

"I am especially thankful for all of our partners who work with us daily to make good things happen for children," said Ron Zychowski, CEO of Community Partnership for Children.

The emergency shelter has 10 beds and provide children who need

immediate placement with specialized educational, therapeutic, clinical, recreational and spiritual services.

"We are excited about adding this program to our array of services," said Mike Galloway, President and CEO of the Florida United Methodist Children's Home. "While we have historically focused on long term care for children during our ninety-nine years of service, we have adapted as the needs of children have changed. Children in crisis need, and deserve, the best we can give them as we help them cope with the traumatic circumstances that bring them to us."

Florida United Methodist Children's Home is one of four foster care service



Partnership CEO Ron Zychowski and Coordinator of Emergency Shelter Care Jennifer Raby.

providers for Community Partnership for Children. The Children's Home, celebrating its 100 year anniversary next year, provides residential care to school-age boys and girls and provides Foster Care and Adoption Services to Volusia, Seminole and Flagler counties.

Community Partnership Provides Case Management To Putnam County



Putnam County, Partnership for Strong Families, Inc. This is a new venture

On July 2, Community Partnership for Children began providing case management services to the lead agency in

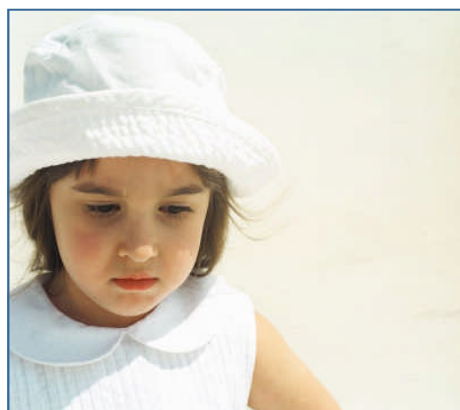
for Community Partnership for Children in terms of providing case management for another lead agency. The transition brings 20 new employees to the Community Partnership team serving approximately 314 children in Putnam County.

As part of the 2007/2008 company Business Plan, the senior management team at Community Partnership

for Children will look for ways to diversify the business, such as was done with the Putnam County project.

"We will learn a great deal from Partnership for Strong Families by providing their case management services, and they will learn from us as well," said CEO Ron Zychowski. "We both hope to benefit from this relationship."

A Day At The Beach Makes A Big Difference



When a child is brought into care at Community Partnership for Children, the placement team works to find them a safe place to live. This may be with a relative, family friend, foster care family or group home. So what do the children do while waiting for a safe place to live?

This summer, thanks to partners at the Ocean Walk Shoppes, the Marine Science Center, and The Museum of Arts and Sciences, Program Coordinator Jeanne Babiez was able to take the children out of the office for an afternoon of summertime

fun. Children were able to participate in learning activities, enjoy a delicious lunch at Bubba Gump Shrimp Co., followed by a tasty treat at Cold Stone Creamery.

"The activities take their mind off of what has happened for a little while and give them a sense of self-worth," explained Jeanne. "Even though the afternoon of fun will not change what has happened to them, it does give them a few glorious moments to just be a kid."



Community Partnership for Children
160 North Beach Street
Daytona Beach, Florida 32114
CommunityPartnershipforChildren.org
Phone: (386) 238-4900
Fax: (386) 238-4880

Board of Directors

Jeralyn Delisi Lowe, *Chair*
Bill Griffin, *Vice Chair*
Willa Marie Smith, *Secretary*
Joe Bendix, *Treasurer*
Dr. Janice Allen-Kelsey
Doug Daniels
Dr. B. J. Primus-Cotton
Dr. Carl Schwenker

Executive Management Team

Ron Zychowski
Chief Executive Officer

Shawn Salamida
Vice President of
Administrative Services

Rachel Smith
Vice President of Programs

Bill Babiez
Chief Financial Officer

Jo Lynn Deal
Chief Development Officer

Jacqueline Eaton
Chief Legal Counsel

Karin Flositz
Vice President of Quality Assurance
and Contracted Services

Sandy Weiland
Director of Clinical Services

Calendar Of Events

Come join us at our event fundraisers to help support our programs and, most importantly, the children in need. Enjoy a great time networking with partners of Community Partnership for Children. **To get involved, please contact Jo Lynn Deal at 386-944-4709.**



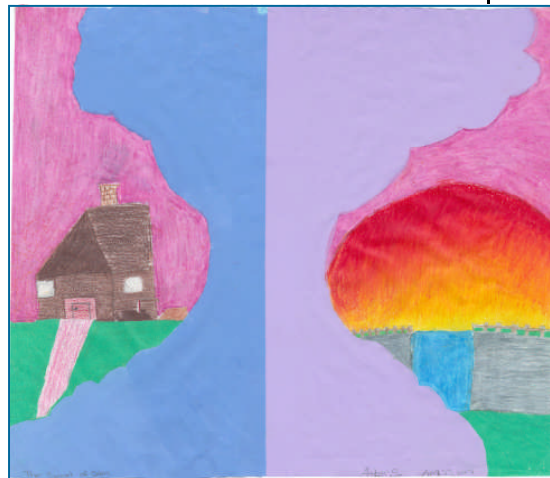
October 2007

- ✧October 7 - 3rd Annual Hand of Hope Poker Run
- ✧October 11 - Estate Planning Luncheon
- ✧October 13 - Devereux Fitness Challenge and Silent Auction
- ✧October 27 - Make A Difference Day 4Kids 5K

November 2007

- ✧November 1 - Donor Appreciation Reception
- ✧November 2 through January 2 - Gingerbread Extravaganza at Volusia Mall

The Sunset Of Colors



This photo and poem were provided by 13 year old Amber, a child in care.

"The Sunset of Colors"

This picture is about my feelings. It is about my feelings of each color. Each color has something that I really enjoy or hurt about.

This picture somewhat relates to the way I feel about my life. It relates to my life because I can think about things. I can think about the things that I like, love, dislike, hate, and wished had never happened.

Some of the things in this picture mean a lot of things to me. The purple on the tree represents my favorite color. The blue on the other side of the tree represents the happiness. The blue for the water represents the tears I cry from my eyes. The colors for the sun represent my mood swings and how it goes from anger to being calm. The color for the sky represents the desire to go to sleep, but not going to sleep. The brown represents my days of craziness and the green is for the anxiety that I carry with me. The gray is for the problems that I wished had never happened before it did. The pink in the road is for my love. The red is for the pain and hurt I have had throughout most of my life. The gate is for everything that is holding me back from most of the things in my life for good or bad reasons. The chimney is for the opportunities that are coming up and waiting to happen just for me. The bark is for people cutting me down for their own reasons. The axe is for the suicidal thoughts that I have had in the past. The wood is for more things that will and will not happen. The window represents the things I look out for but still cannot see.